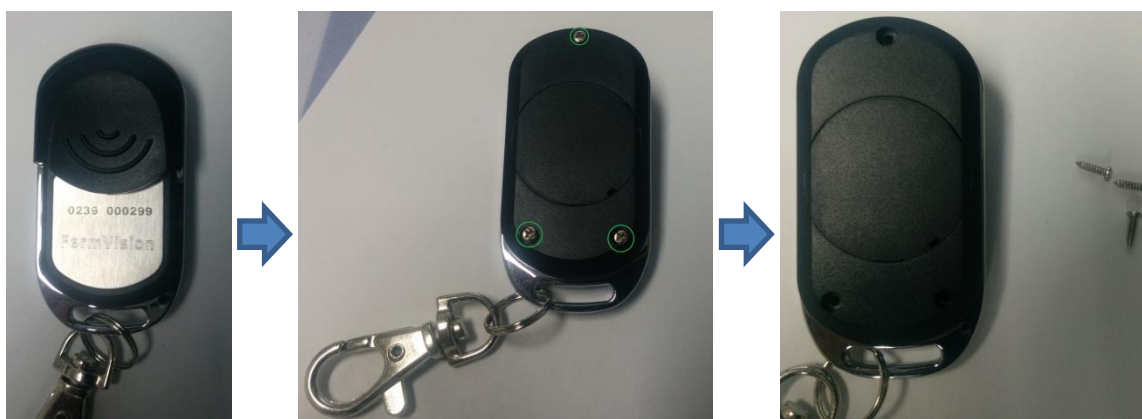
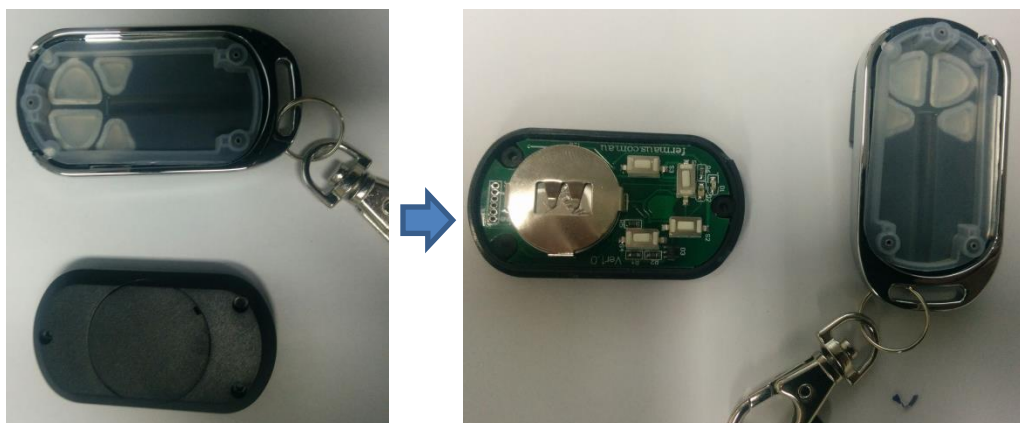


1. Remove three screws from behind the remote by using a small screwdriver.



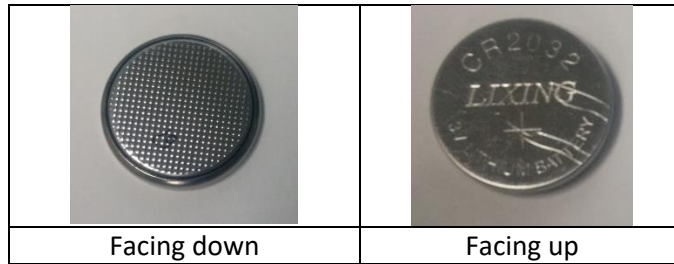
2. Carefully remove the top cover with the circuit board on.



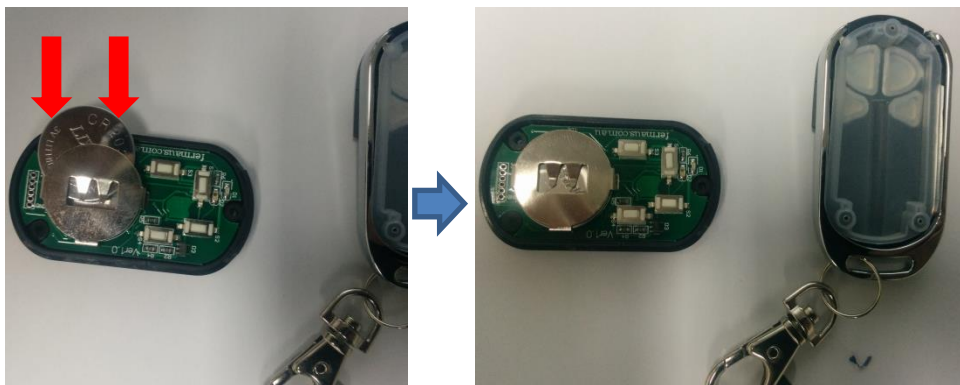
3. Push the battery out as shown in the picture below



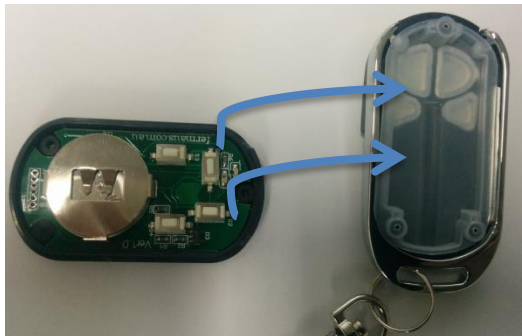
4. The battery has two sides (type CR2032)



5. Insert the new battery:



6. Put the remote back together by carefully placing the back part / circuit board on top of front side:



7. Finally, put the screws back on.

