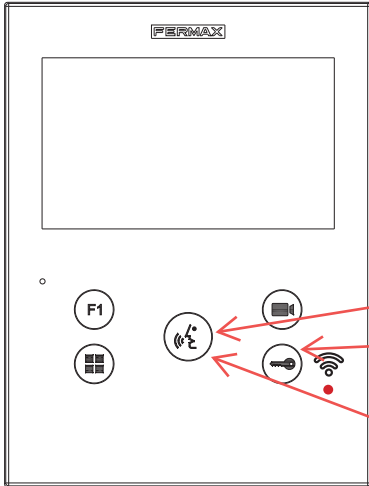




3 STEP GUIDE FOR DUOX WIFI MONITOR VEO XS (FER-9449)



To activate call divert, download the FERMAX Blue app from the Google Play or the Apple App Store and then follow the instructions within the App. **The DUOX PLUS Wifi monitor is only compatible with 2.4GHz WiFi.**

1. Press once to answer call
2. Press once to unlock the door
3. Press once to hang-up

LEDs

● Red LED:

Solid when the monitor is in idle.

Blinks slowly when you are in Do Not Disturb mode.

Note: If the Do Not Disturb mode is active, you may reactivate the call by sliding the volume sliders on the right to any position other than the minimum.

● Blue LED:

You are in conversation with the door station.

📶 Wifi LED Symbol:

Solid when the monitor is paired in standby state

Flashing when the monitor is trying to pair or call divert in progress.

NSW (HEAD OFFICE)

(02) 9700 1700
nsw@fermaxaus.com.au

SA OFFICE

(08) 7009 4288
sa@fermaxaus.com.au

QLD OFFICE

(07) 5520 2266
qld@fermaxaus.com.au

ACT OFFICE

(02) 6190 1555
act@fermaxaus.com.au

VIC OFFICE

(03) 9314 2220
vic@fermaxaus.com.au

NT OFFICE

(08) 7999 9162
nt@fermaxaus.com.au

WA OFFICE

(08) 9240 2624
wa@fermaxaus.com.au

NZ OFFICE

(08) 7999 9162
nz@fermaxnz.co.nz