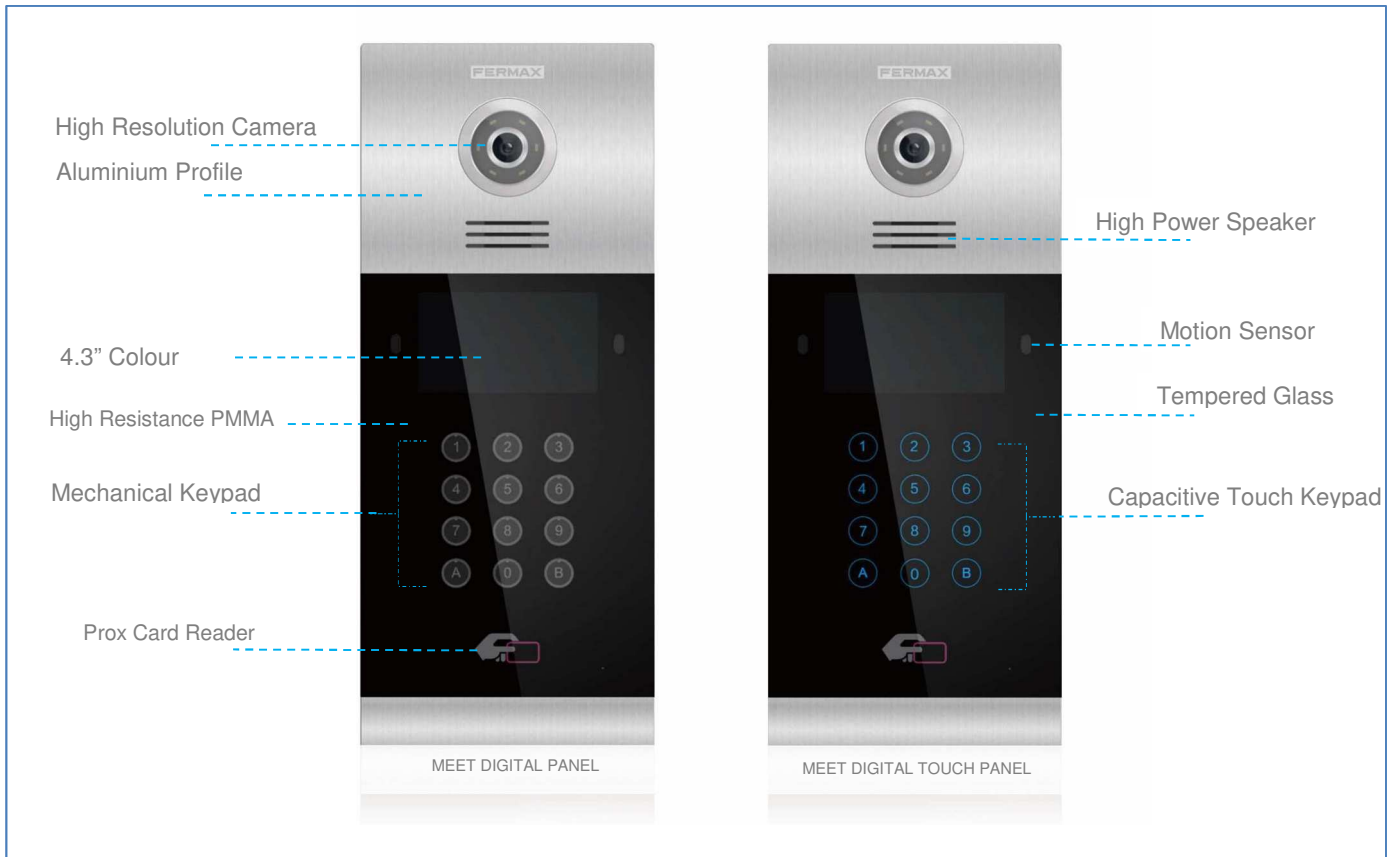


REF.9531/9532 DIGITAL VIDEO MEET PANEL



MEET panel is presented in two different versions: capacitive touch keypad and mechanical keypad. Its 4.3" TFT screen shows the user the steps to follow.

FEATURES

- Aluminum Profile
- High Resistance Tempered Glass (Touch Panel)
- Hands Free Audio Communication
- High Definition Colour Camera
- 4.3" Colour TFT Screen
- SIP P2P Protocol
- Wide Range Working Environment
- Android Modular Structure
- High Capacity CPU
- Access Control Integrated For 100.000 Cards
- RS485 Integration Ready (Lift Control)
- Available In 10 Languages
- Remote Firmware Update

FUNCTIONS

CALL TENANT

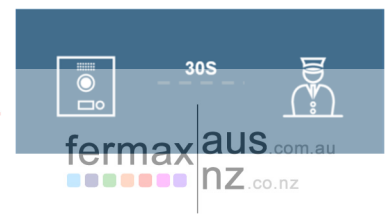
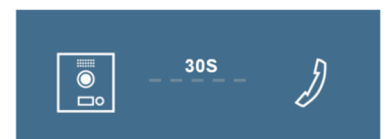
Visitors are able to call the desired tenant from the General Entry or the Block Entry.

General Entry: Visitors need to enter a 3 digits block number followed by a 4 digits apartment number. For example, if the addressee lives in block 10 apartment 101, the visitor shall enter: 0100101

Block Entry: Visitors need to enter a 4 digits apartment number. For example, if the addressee lives in apartment 201, the visitor shall enter: 0201.

CALL GUARD UNIT

If the visitor or tenant needs to be assisted they are able to call the main Guard Unit by entering the number 9901. This call can be made from both General Entry and Block Entry. Up to 98 different guard units can be called (9901..9998). For each guard unit it is possible to have 4 slaves associated guard units that will receive the same call.



TECHNICAL SPECIFICATIONS

System:

- CPU: Quad-core Cortex™-A7 1.5GHz
- GPU: Mali400MP2
- FLASH: 4GB
- SDRAM: 1GB DDR3L

Screen:

- 4.3" Color TFT
- Resolution 480*272 pixel
- View angle: 110° H, 90° V
- Contrast: 400/1
- Brightness: 200cd/m2

Audio Features:

- G.711 codec
- Audio OLR> 15dB

Camera:

- 1/3" CMOS Color
- 90o diagonal Lens: Horizontal 72°, Vertical 54°
- 1.3 Mega Pixels
- Minimum Illumination 0.5 LUX. Automatic white led activation
- AWB

Power Consumption:

- On standby: 250 mA
- Working: 500 mA

Working voltage:

- 12 VDC

Connectivity:

- Ethernet RJ-45 Connector
- RS485 connection port for lift control
- Secondary access control reader connection (Wiegand 26)
- Built in web server for configuration and remote management

Working Environment:

- Temperature: -10 °C.. + 70 °C
- Humidity: 20 – 80% (Non-condensing)
- IP 54
- IK 07

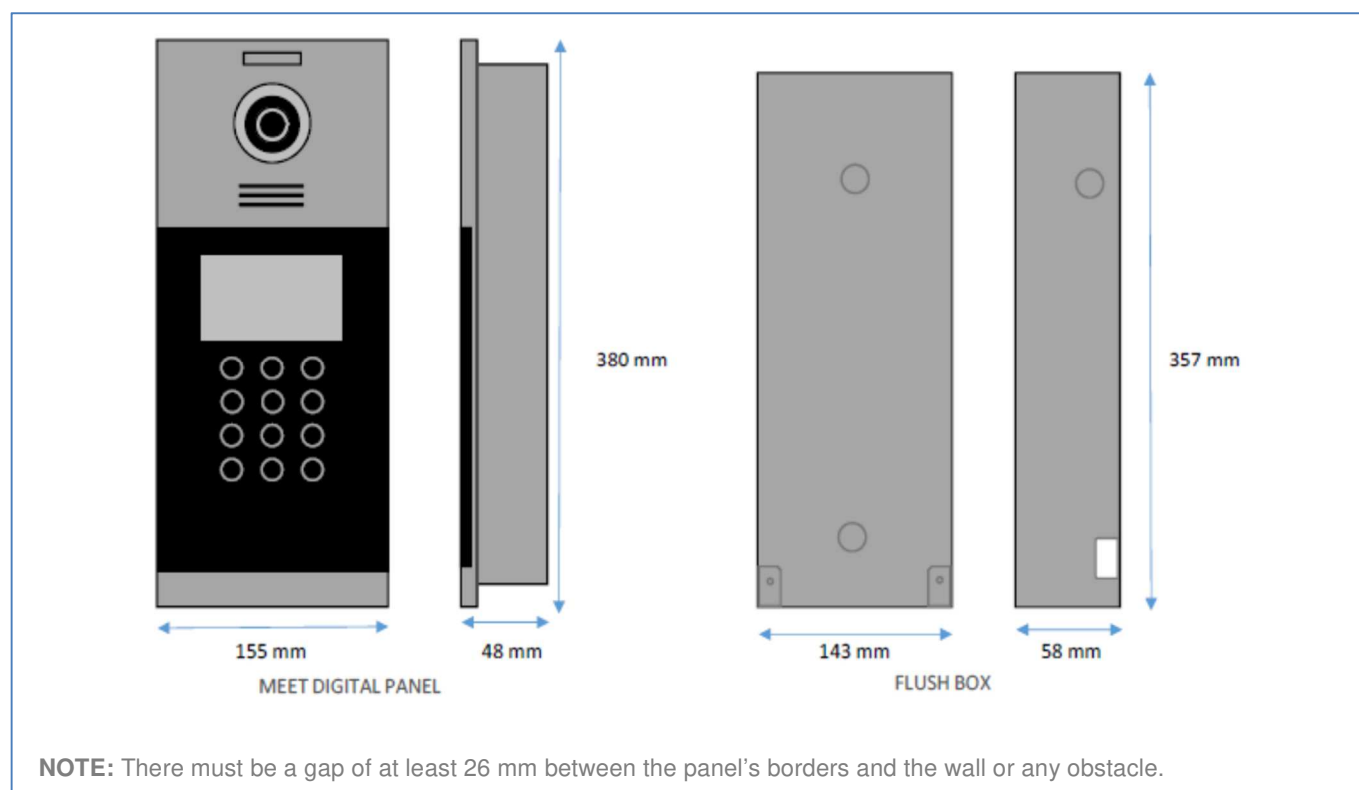
REFERENCES

Ref.9531 DIGITAL VIDEO MEET PANEL

Ref.9532 DIGITAL VIDEO TOUCH MEET PANEL

Ref.9542 MEET PANEL FLUSH BOX – L

DIMENSIONS (mm)



HEAD OFFICE

U1, 37-39 Green St,
Banksmeadow, NSW, 2019
p. 61 2 9700 1700
f. 61 2 9700 1955
sales@fermaxaus.com.au

QLD OFFICE

U11, 8 Fortitude Cres,
Burling Heads, QLD, 4220
p. 61 7 5520 2266
f. 61 7 5520 4591
qld@fermaxaus.com.au

VIC OFFICE

U30, 640-680 Geelong Rd,
Brooklyn, VIC, 3012
p. 61 3 9314 2220
f. 61 3 9314 7772
vic@fermaxaus.com.au

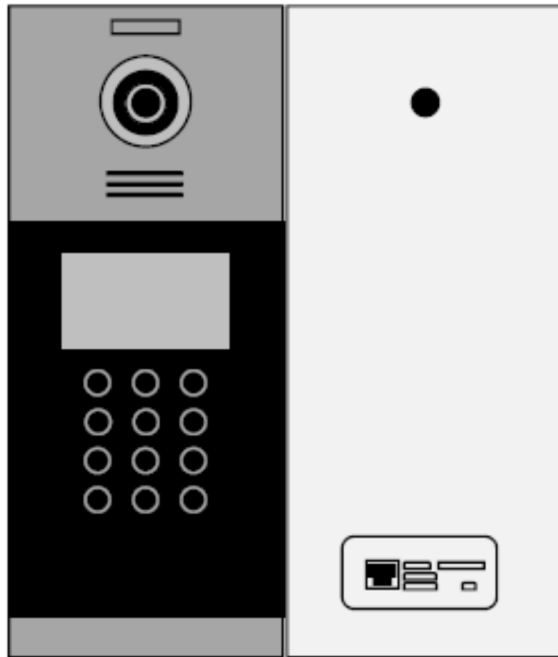
WA OFFICE

U2, 26 Gibberd Rd,
Balcatta, 6914
p. 61 8 9240 2624
wa@fermaxaus.com.au

NZ OFFICE

PO Box 112 110
Penrose, 1642
m. 64 27 566 0222
p. 64 9 337 6229
nz@fermaxnz.co.nz

CONNECTIONS



RJ-45 10/100 Base -T Ethernet
+, -: 12 Vdc power supply input
BS, -, -, SP: Exit button and door sensor
NO, NO, C, C, NC: Door lock release connection
485+, 485-: RS485 serial port for lift control integration

HEAD OFFICE

U1, 37-39 Green St,
Banksmeadow, NSW. 2019
p. 61 2 9700 1700
f. 61 2 9700 1955
sales@fermaxaus.com.au

QLD OFFICE

U11, 8 Fortitude Cres,
Burlleigh Heads, QLD. 4220
p. 61 7 5520 2266
f. 61 7 5520 4591
qld@fermaxaus.com.au

VIC OFFICE

U30, 640-680 Geelong Rd,
Brooklyn, VIC. 3012
p. 61 3 9314 2220
f. 61 3 9314 7772
vic@fermaxaus.com.au

WA OFFICE

U2, 26 Gibberd Rd,
Balcatta, 6914
p. 61 8 9240 2624
wa@fermaxaus.com.au

NZ OFFICE

PO Box 112 110
Penrose, 1642
m. 64 27 566 0222
p. 64 9 337 6229
nz@fermaxnz.co.nz