



Audio, Video and IP Intercom Systems | Bespoke Door Stations | Access Control | Sound Distribution |
CCTV and IP Cameras | Intruder Alarms | Residential & Commercial | Security Consultancy



DUOX VEO XS MONITOR WITH MEMORY

QUICK START GUIDE

HEAD OFFICE

U1, 37-39 Green St,
Banksmeadow, NSW. 2019
p. 61 2 9700 1700
f. 61 2 9700 1955
sales@fermaxaus.com.au

QLD OFFICE

U11, 8 Fortitude Cres,
Burlleigh Heads, QLD. 4220
p. 61 7 5520 2266
f. 61 7 5520 4591
qld@fermaxaus.com.au

VIC OFFICE

U30, 640-680 Geelong Rd,
Brooklyn, VIC. 3012
p. 61 3 9314 2220
f. 61 3 9314 7772
vic@fermaxaus.com.au

WA OFFICE

U2, 26 Gibberd Rd,
Balclutha, 6914
p. 61 8 9240 2524
wa@fermaxaus.com.au

SA OFFICE

PO Box 161
Torrensville Plaza, 5031
m. 61 438 700 811
sa@fermaxaus.com.au

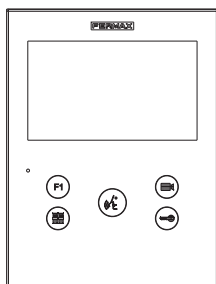
NZ OFFICE

PO Box 112 110
Penrose, 1642
m. 64 27 566 0222
p. 64 9 337 6229
nz@fermaxnz.co.nz



START GUIDE FOR MONITOR VEO XS DUOX

CONTROL BUTTONS



Digital menu for internal parameter settings and configuration.
(When the monitor has already been programmed)



In conversation, press to open the door.
In standby, call to guard unit (if applicable).



Auxiliary function, (contact your installer).



In standby, press and it displays the option of auto-starting with different panels. By sequentially pressing Panel 0, Panel 1, General Panel, (depending on the available panels).



Audio activation and hang-up (hands-free functions).



Inductive loop label
(depending on the model)



VEOX XS monitor incorporates an OSD menu that is managed via the monitor's push buttons to access the terminals' user and programming functions. The icons displayed are managed with the corresponding buttons located on the monitor.

LEDs

● Red LED:

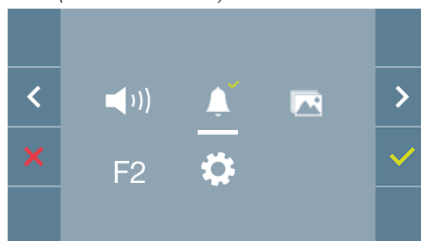
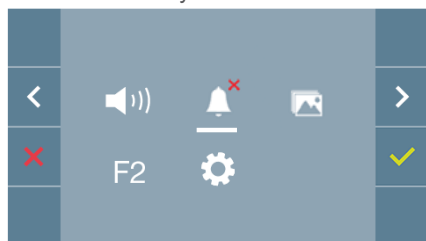
Switched on. Monitor is idle.
Intermittent. Indicates that the Do Not Disturb feature is enabled.

● Blue LED:

Intermittent. Monitor not programmed (*idle*).
Switched on. Conversation in hands-free audio mode.
On/Intermittent. Conversation in simple audio mode

4.2 USER MENU: DO NOT DISTURB MODE

This icon allows you to enable/disable the Dial Tone (*Do Not Disturb*).



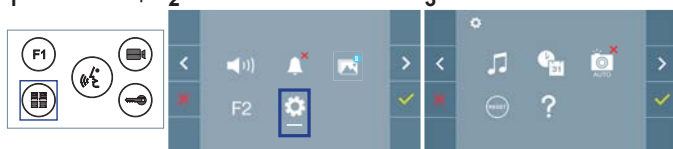
Press the icon to change the selection. By default normal operation is selected (*The call is heard*).

The red LED on the monitor blinks slowly when the Do Not Disturb mode is active.

Note: If the Do Not Disturb mode is active, you may reactivate the call via this screen or by sliding the potentiometer to any position other than the minimum.

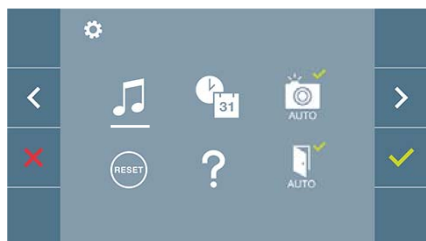
USER SETTINGS

1 Access user parameters.



With select the icon and confirm with .

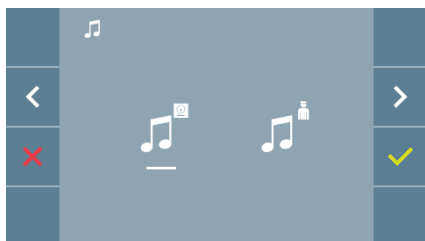
4.5.1 User parameter settings: **MELODY SELECTION**



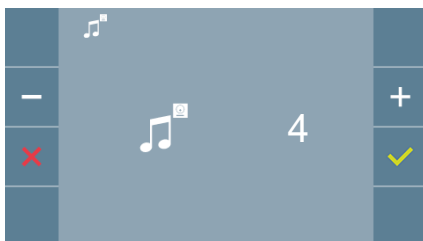
The monitor allows you to select a melody for each individual panel and another for the concierge.

You may assign up to 5 different melodies.

a) Panel melody selection



By selecting this option you can change the melody that you hear on the monitor when a call is made from outdoors.



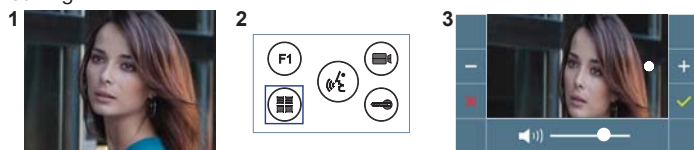
Once you have selected the option, you will see and hear the current melody, and by pressing the + or - button you can, continue selecting and listening to the various melodies available on the monitor.

5.2 SETTINGS: **AUDIO SETTINGS**

Select the settings option and increase or decrease with

AUDIO SETTINGS

While the audio channel is open, press the button and a menu screen appears for this setting.



Increase or decrease with and , until obtaining the desired regulation.

Notice: Maximum conversation time: 90 seconds.

USER SETTINGS

Access user parameters.

1

2

3

1. Date and Time Settings

2. Capture images

With select the icon and confirm with .

1. DATE AND TIME SETTINGS

1

With select the icon and confirm with .

2

With select the date format. Once selected confirm with .

3

Select the date and hour with and confirm with . To browse the settings .

Date not set: 01/01/2017 (default). The icon appears indicating that the date is not correct (default date). Upon losing power, it returns to the default date.

Note: If an image is captured with the date not yet set, the following icon appears .

Notification icons for a date not set:

User Menu Screen

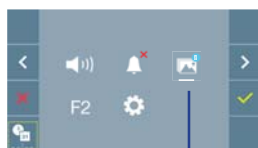


Image Viewer

Communication screen

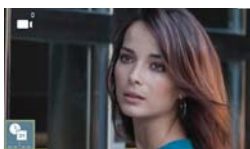
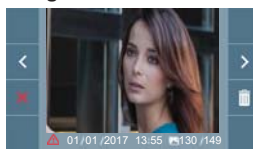


Image viewer screen



2. ACTIVATION/DEACTIVATION OF VIDEO CAPTURE

The monitor can take an automatic picture within 5 seconds of receiving a call from an outdoor panel. According to the European Union legislation about data protection ((EU) 2016/679), the capture of images may be restricted. This feature is deactivated by default in all monitors, although can be activated at your own responsibility. Furthermore, the legislation may force to place a sign next to door stations, indicating that monitors can capture images. You can download it at <https://www.fermax.com/intl/en/corporate/utilities.html>.

1

With select the icon and confirm with .

2

Press to activate/deactivate the function.

3