



fermax **aus**.com.au
nz.co.nz



Audio, Video and IP Intercom Systems | Bespoke Door Stations | Access Control | Sound Distribution | CCTV and IP Cameras | Intruder Alarms | Residential & Commercial | Security Consultancy



Extend your view of ANPR cameras.

Get more than just license plate recognition: on-board intelligence, built-in triggering, make-and-model recognition, and even speed measurement... independently of light conditions and enduring all weather conditions on the planet.

That's all yours with Vidar

Setup is a breeze

It guides you through the steps and automatically tunes itself for the best settings.

Smart triggering

Multiple non-intrusive vehicle detection functions, performed on-board.

Adaptive to everything

The ever-changing light conditions in 0-24, weather and temperature extremes... Vidar still withstands.

NSW (HEAD OFFICE)

(02) 9700 1700
nsw@fermaxaus.com.au

SA OFFICE

(08) 7009 4288
sa@fermaxaus.com.au

QLD OFFICE

(07) 5520 2266
qld@fermaxaus.com.au

ACT OFFICE

(02) 6190 1555
act@fermaxaus.com.au

VIC OFFICE

(03) 9314 2220
vic@fermaxaus.com.au

NT OFFICE

(08) 7999 9162
nt@fermaxaus.com.au

WA OFFICE

(08) 9240 2624
wa@fermaxaus.com.au

NZ OFFICE

(09) 337 6229
nz@fermaxnz.co.nz



Integrated, non-intrusive triggers

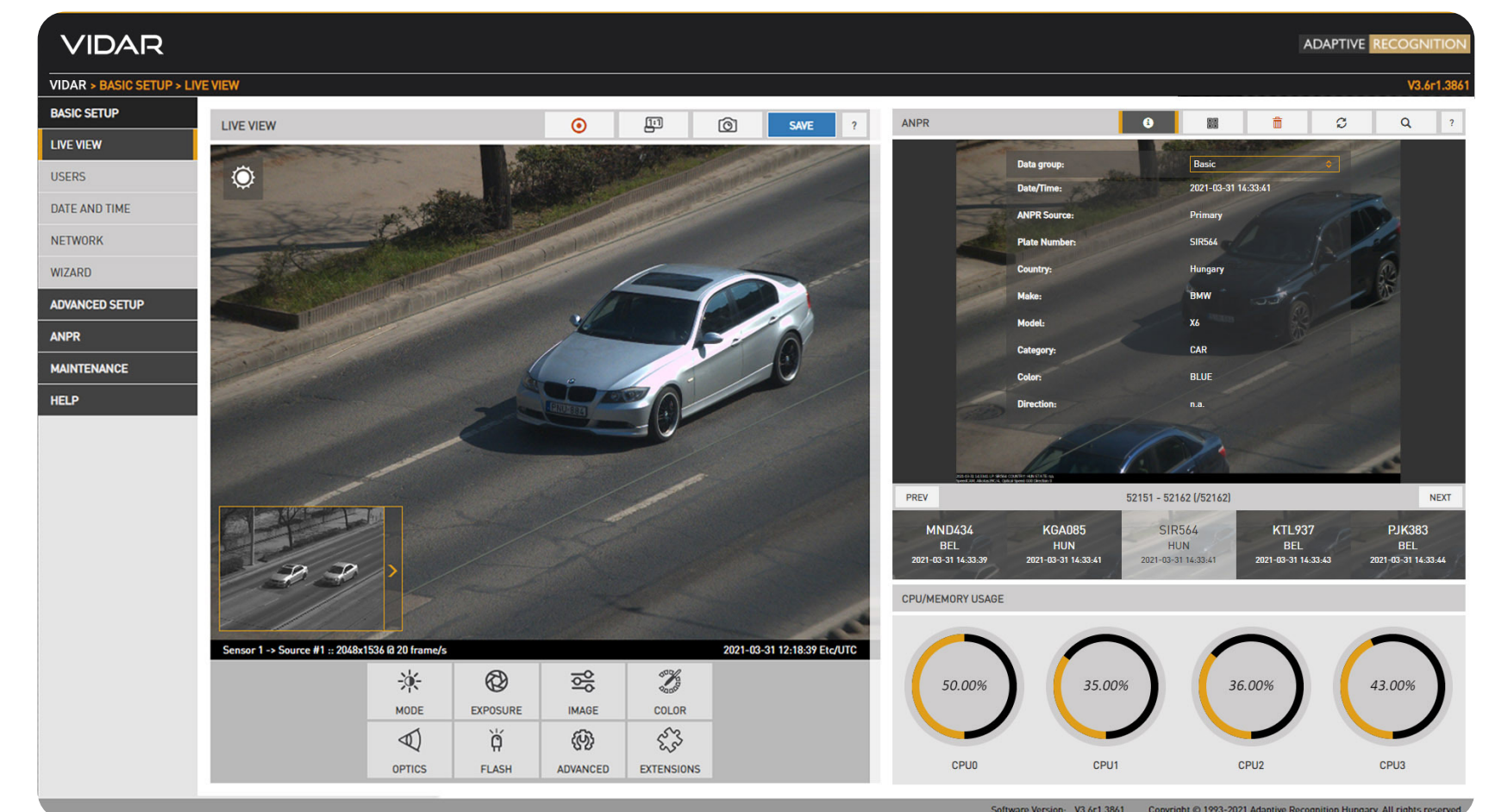
No more missed vehicles

It's not only the perfect imaging that makes ANPR reliable – you will also need to capture vehicles at the right time and spot to have ANPR-ready input for your system. Vidar has this function integrated, so you do not need to bother with any external triggering. On top of that, these triggering features are 100% non-intrusive, meaning that you won't need to break asphalt like in the case of classic induction loop technology.

Adaptive to the light conditions

From a bright morning to a pitch-black night

The traffic never sleeps – it's on the road, constantly moving in 0-24, and your system's performance should not depend on the ever-changing light conditions during the day. Vidar knows it well, automatically adapts to day and night, while it handles even the special hours when sunlight strikes the view directly, or when there is absolutely no light but only vehicles' reflectors beaming into the camera.



NSW (HEAD OFFICE) (02) 9700 1700 nsw@fermaxaus.com.au	QLD OFFICE (07) 5520 2266 qld@fermaxaus.com.au	VIC OFFICE (03) 9314 2220 vic@fermaxaus.com.au	WA OFFICE (08) 9240 2624 wa@fermaxaus.com.au
SA OFFICE (08) 7009 4288 sa@fermaxaus.com.au	ACT OFFICE (02) 6190 1555 act@fermaxaus.com.au	NT OFFICE (08) 7999 9162 nt@fermaxaus.com.au	NZ OFFICE (09) 337 6229 nz@fermaxnz.co.nz

fermaxaus.com.au
nz.co.nz

Powered by Carmen®

How do you prefer ANPR: on-board or via the cloud?

Vidar is available with or without onboard processing. Those models with onboard processing have the ANPR and optionally the make/model/color recognition functions performed by the camera itself. Models without such integrated processing are cloud-enabled by default, meaning that they have a ready-to-use connection to ANPR Cloud, our online vehicle identification service.



Dual design: ANPR + overview

Several Vidar models come with a dual optic system – with two color sensors and varifocal lenses. You can decide whether the secondary camera is used for general overview purposes or for secondary (backup) ANPR.

Resists weather and vandalism

Heavy rain, snow, tropical climate, or dusty wind – no problem for Vidar. It's designed for 0-24 operation and offers 50,000 hours MTBF, IP67-compliant design, and IK10-certified case, making it completely weather-resistant (and even vandal-proof) – in any corner of the world.

Robotic assembly

Our robots make Vidar easier to produce, less error-prone and more future-proof. This way, we can not only better react to short deadline projects, but our customers will be also able to perform onsite service without any special training or sending the units back to us.

NSW (HEAD OFFICE)

(02) 9700 1700
nsw@fermaxaus.com.au

SA OFFICE

(08) 7009 4288
sa@fermaxaus.com.au

QLD OFFICE

(07) 5520 2266
qld@fermaxaus.com.au

ACT OFFICE

(02) 6190 1555
act@fermaxaus.com.au

VIC OFFICE

(03) 9314 2220
vic@fermaxaus.com.au

NT OFFICE

(08) 7999 9162
nt@fermaxaus.com.au

WA OFFICE

(08) 9240 2624
wa@fermaxaus.com.au

NZ OFFICE

(09) 337 6229
nz@fermaxnz.co.nz

