

# FERMAX

THE VALUE OF A LEADING BRAND

fermax **aus**.com.au  
■ ■ ■ ■ ■ ■ **nz**.co.nz

70 **FERMAX**  
1949-2019

"Our business mantra states that we shall work with you and your associates at your convenience to personally take you through our product range on-site or within our showroom as well as providing on-site after sales support as required"



## 70 YEARS OF EXPERIENCE

The world has changed a lot in the last seven decades. Change is the only certainty in today's world but one which Fermax thrives on as it responds to the needs of an increasingly diverse and constantly evolving society that seeks to utilize technological advances to fulfill aspirations.

Although we have been making products since 1949, we have learned that it is all about building communications. It's about people. It's about you.

Time and passionate dedication have led us to become a world leading company in communication systems for residential buildings, homes and businesses.

DUOX  
SMART SYSTEM

DIGITAL SYSTEM  
IN 2 WIRES NON-POLARISED

DUOX is the world's first fully digital system that requires only two wires.

DUOX embodies Fermax's innovative advancements in audio and video intercom systems.

Harnessing the power of digital communication, DUOX combines high performance with flexibility.

This two-wire door entry system is constructed with two non-polarised wires, reducing overall cost and minimising installation time.

N

5

4

## FERMAX NSW OFFICE

Unit 1, 37-39 Green St,  
Banksmeadow, NSW. 2019

p: 02 9700 1700  
e: [sales@fermaxaus.com.au](mailto:sales@fermaxaus.com.au)

## Southbank, NSW

Southbank apartments contains a mix of 336, studio, 1, 2 and 3 bedroom apartments boasting classic qualities which are beautifully offset by contemporary design features. Glazed partitions link the interior and exterior spaces and create an abundance of natural light. A Scandinavianinspired material palette give the Southbank apartments a fresh and modern ambience. Designer flourishes, such as optional timber flooring, glazed framing and concrete light fittings truly set the stage for luxury living.

System: MDS/VDS

- 3 x Blocks
- 336 x 7" SMILE Monitors
- 24 x Skyline Doorsations
- Elevators with Lift Security
- Integrated Access Control
- IP CCTV System



# Sydney Harbor Tunnel, NSW

Over two nights from 10pm to 4am the Sydney Harbour Tunnel was closed to enable the successful upgrade of the Motorists Emergency Telephone System (METS). The current system was replaced by a Fermvision IP intercom system running over a fibre optic backbone and at times utilizing the existing copper cabling.

In total 80 x Emergency phones were replaced in the North and South tunnel with the new panels designed and manufactured to suit the existing housing to facilitate a seamless transfer.

System: Fermvision SIP

- 80 x Lift-off Emergency IP Phones
- 1 x Self monitoring control software





## Kingswood, NSW

System: MDS/DUOX  
 - 97 x LOFT Audio Handsets  
 - 3 x Skyline Doorstations  
 - Elevators with Lift Security  
 - Integrated Access Control  
 - IP CCTV System

## Infinity Cove, NSW

System: MEET IP  
 - 92 x 7" WIT Monitors  
 - Smartphone App Enabled  
 - Integrated Access Control  
 - High Security Readers  
 - 16 x 5MP IP CCTV



V

FERMAX VIC OFFICE

Unit 30, 640-680 Geelong Rd,  
Brooklyn, VIC. 3012

p: 03 9314 2220  
e: vic@fermaxaus.com.au

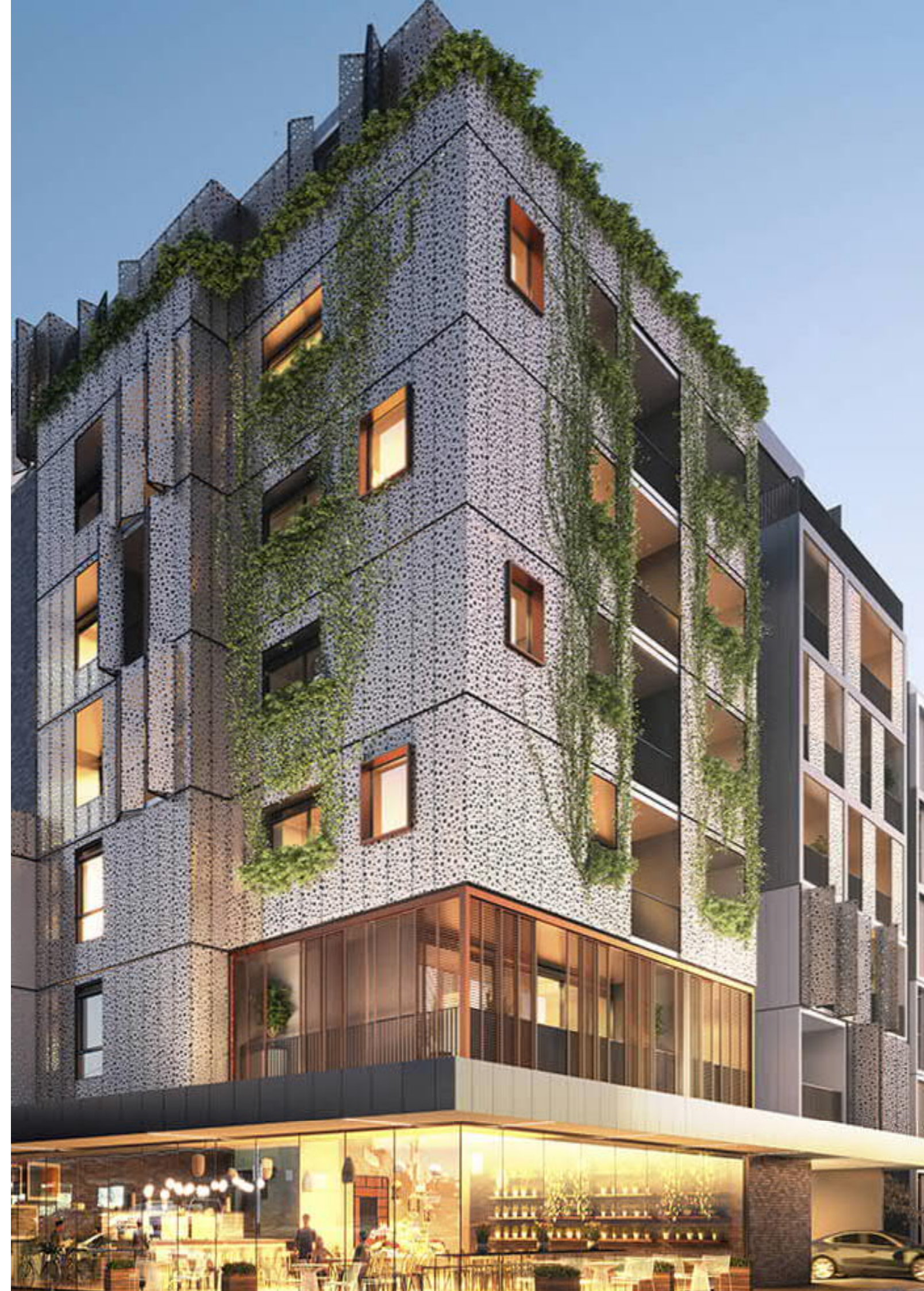
## Northcote, VIC

This residential project is contemporary, urban and sophisticated, but also timeless. All apartments have substantial balconies for enjoying outdoor living, dining and entertainment. These have a shutter system that can be opened to allow more light into the apartments and to show individual balconies, or closed to provide shelter and privacy.

The building's façade has an industrial aesthetic achieved by using exposed structural grid elements and metal cladding. Incorporated into the façade, descending plants and greenery provide the perfect balance to the metal exterior, bringing the building to life and creating a unique lush outlook for the apartments.

System: MDS/VDS

- 114 x 7" SMILE Monitors
- 2 x Skyline Doorstations
- Elevators with Lift Security
- Integrated Access Control
- IP CCTV System



## LongHouse, VIC

Framed cantilever structures of different colours, materials and proportions create a change of rhythm as you walk down the street. Like a series of parts rather than one dominating building, dynamic forms and scaled objects add elements of surprise.

System: MDS/VDS

- 81 x 3.5" SMILE Monitors
- 2 x Skyline Doorstations
- Lift Security
- Integrated Access Control





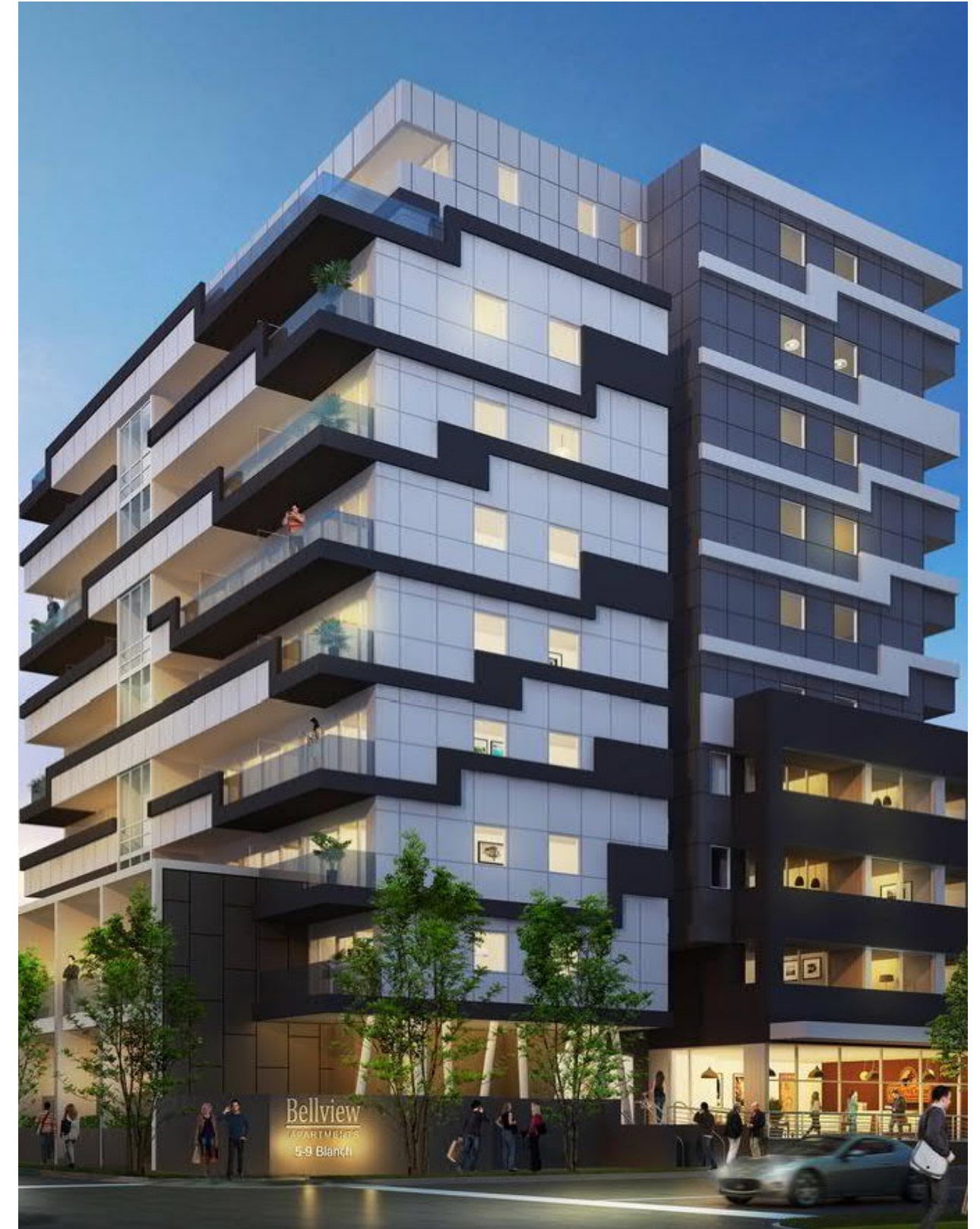
Cannatella, VIC

System: MDS/VDS  
 - 30 x 3.5" SMILE Monitors, 1 x Skyline Doorstation, Integrated Access Control, IP  
 CCTV System



Hallmark, VIC

System: MDS/VDS  
 - 31 x 3.5" SMILE Monitors, 3 x Skyline Doorstations, Integrated Access Control, IP  
 CCTV System



Bellview, VIC

System: MDS/VDS  
 - 114 x 3.5" SMILE Monitors, 2 x Skyline Doorstations, Integrated Access Control, IP  
 CCTV System



## FERMAX QLD OFFICE

Unit 11, 8 Fortitude Cres,  
Burleigh Heads, QLD. 4220

p: 07 5520 2266  
e: [qld@fermaxaus.com.au](mailto:qld@fermaxaus.com.au)

## Unilodge, QLD

The purpose-built high-rise features 1,578 rooms and offers life-style, comfort and convenience, as well as catering to the current demand for more student housing in the city.

System: Fermvision SIP

- 2 x SIP Doorstations with Keypad
- 4 x 500 SIP Servers
- Smartphone Video App
- On-site Management Software
- Elevators with Lift Security



## North Residence, QLD

North Residences incorporates just 7 exclusive apartments on The Esplanade at Burleigh, uniting uninterrupted ocean views with light-filled living spaces and positioning you perfectly to make the most of every day. Sheathed in glass, North honours its location with an architectural style that dissolves the boundaries between sea and shore, creating residences that beckon irresistibly.

System: MDS/VDS

- 7 x 7" SMILE Monitors
- 2 x Skyline Doorstations
- Lift Security
- Integrated Access Control





### Osprey, QLD

System: Fermvision 2-Wire  
 - 20 x 7" Touch Screen Monitors  
 - 50 x Audio Handsets  
 - 5 x Doorstations with Prox  
 - Integrated Access Control

### Unison Towers, QLD

System: MDS/VDS  
 - 180 x 3.5" SMILE Monitors  
 - 4 x Skyline Doorstations  
 - 4 x Elevators with Lift Security  
 - Integrated Access Control



# W

29

28

## FERMAX WA OFFICE

Unit 2, 26 Gibberd Rd,  
Balcatta, WA. 6914

p: 08 9240 2624  
e: [wa@fermaxaus.com.au](mailto:wa@fermaxaus.com.au)

## The Bottleyard, WA

The Bottleyard is a great example of an affordable apartment building development that creates an architecture to engage with its inner city vernacular and the Perth climate. The 125 apartments are grouped into seven separate buildings of varying scale and massing across the site to establish three distinct courtyard spaces for the residents and appropriately designed frontages for the two streets, laneway and parkland settings.

System: Fermax MDS/VDS  
- 125 x 3.5" SMILE Monitors  
- 5 x Skyline Doorsations  
- Elevators with Lift Security  
- Integrated Access Control



## Form, WA

Form posed an opportunity for the architect to design a show-case building that would revel in its location, respond to its environment and above all else, offer residents an uncompromising lifestyle. Situated in the sought after Port Coogee Marina Estate the idea of living on the WA coast for some conjures up a sense of adventure. For others, it provides a means to unwind. Characterised by interlocking balconies and differentiated by height this building is an urban form that cleverly captures the surrounding vistas including the marina and landscaped parklands creating an inviting, engaging and liveable place.

System: MDS/VDS

- 80 x iLOFT Audio Handsets
- 3 x Skyline Doorsations
- Lift Security
- Integrated Access Control





Heirloom, WA

System: MDS/VDS  
 - 187 x iLOFT Audio Handsets, 3 x Skyline Doorstations, Integrated Access Control



St Ives, WA

System: MDS/VDS  
 - 65 x 7" SMILE Monitors, 7 x Skyline Doorstations, Integrated Access Control



M/28, WA

System: VDS  
 - 28 x iLOFT Audio Handsets, 1 x Skyline Doorstation

# S

37

36

## FERMAX SA OFFICE

PO Box 161,  
Torrensville Plaza, SA. 5031

p: 0438 700 811  
e: [sa@fermaxaus.com.au](mailto:sa@fermaxaus.com.au)

## Globe East End, SA

The 15 level building comprises 14 levels of apartments. Level 1 facilities include a user friendly common area with a TV room and two study rooms. The ground floor is an integrated Lobby reception area housing the operator's space and a 100m2 cafe. The building has been designed to ensure a safe and secure environment for students. Building and lift lobby access is only granted through swipe card access together with individual swipe cards for each apartment entry door.

System: MDS/4+N  
- 97 x 7" SMILE Monitors  
- 1 x Skyline Doorstation  
- Integrated Access Control



40

## The Artisan, SA

The design of The Artisan draws on the aesthetic of industrial materials, performed in an up-market and contemporary composition. The apartments feature a range of internal materials and finishes with a strong focus on texture, light, and constructability.

System: MDS/VDS

- 50 x 13.5" SMILE Monitors
- 1 x Skyline Doorsations
- Elevators with Lift Security



Ergo, SA

- System: MDS/VDS
- 52 x LOFT Colour Monitors
  - 1 x Skyline Doorstations
  - Elevators with Lift Security

The Bowery, SA

- System: MDS/VDS
- 54 x 3.5" SMILE Monitors
  - 1 x Skyline Doorsation
  - Elevators with Lift Security



Z

45

44

## FERMAX NZ OFFICE

PO Box 121 110,  
Penrose. 1642

p: 09 337 6229  
e: [nz@fermaxnz.co.nz](mailto:nz@fermaxnz.co.nz)

## Connect Apts, NZ

Connect is located in the heart of Auckland. A stroll down to the boutiques and Cafés of High Street and Vulcan Lane immerses you in a vibrant streetscape of heritage buildings and avant-garde fashion. Or a walk through leafy Albert Park could bring you to the university precincts, and from there it's just minutes to the thrilling theatre district.

Those with an eye for business will be attracted by the proximity to the city's premier corporate addresses, with Shortland Street and Auckland's main street, Queen Street, close by. Blue chip neighbours include numerous multinationals including Vero, Deloitte and the BNZ. The very best that Auckland has to offer, including Britomart's parade of fashionable eateries and the city's main transport hub with trains buses and ferries, all right on your doorstep.

System: MDS/VDS  
- 97 x 7" SMILE Monitors  
- 1 x Marine Doorstation  
- Integrated Access Control



## One Market Lane, NZ

The brief to Studio Pacific Architecture was to design a building worthy of this site, and to maximise the views and light within the apartments.

The exterior is unashamedly contemporary, while inside you can fully appreciate the true elegance of the design with the advantages of views and light that the building's geometry creates.

The building is 11 stories high, with the building elegantly broken down into distinct forms, and carefully integrated into the site and the historic Taranaki Wharf Precinct that forms its neighbourhood.

System: VDS  
- 42 x 7" Flush SMILE Monitors  
- 1 x Skyline Doorsations  
- Lift Security Interface





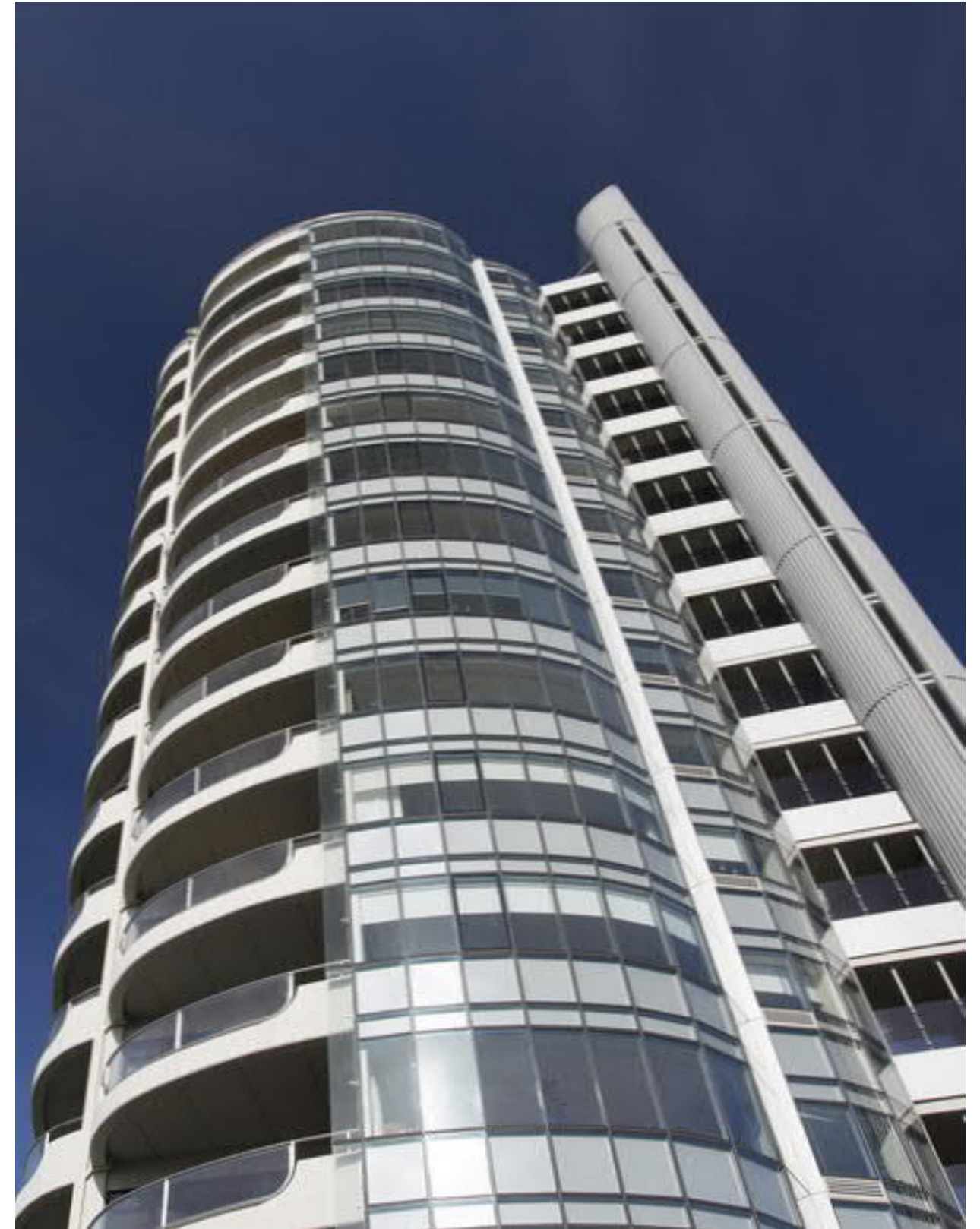
Chelsea Bay, NZ

System: MDS/VDS  
 - 56 x 3.5" SMILE Monitors, 1 x Skyline Doorstation, Integrated Access Control



Fleet St, NZ

System: VDS  
 - 33 x 7" Touch Screen Monitors, 1 x Skyline Doorstations



Shangri-La, NZ

System: LYNX/MDS  
 - 15 x 7" IP SMILE Monitors, 3 x IP Marine Doorstation, Integrated Access Control

## NSW OFFICE

Unit 1, 37-39 Green St,  
Banksmeadow, NSW. 2019

p: 02 9700 1700  
e: [sales@fermaxaus.com.au](mailto:sales@fermaxaus.com.au)

## VIC OFFICE

Unit 30, 640-680 Geelong Rd,  
Brooklyn, VIC. 3012

p: 03 9314 2220  
e: [vic@fermaxaus.com.au](mailto:vic@fermaxaus.com.au)

## QLD OFFICE

Unit 11, 8 Fortitude Cres,  
Burleigh Heads, QLD. 4220

p: 07 5520 2266  
e: [qld@fermaxaus.com.au](mailto:qld@fermaxaus.com.au)

## WA OFFICE

Unit 2, 26 Gibberd Rd,  
Balcatta, WA. 6914

p: 08 9240 2624  
e: [wa@fermaxaus.com.au](mailto:wa@fermaxaus.com.au)

## SA OFFICE

PO Box 161,  
Torrensville Plaza, SA. 5031

p: 0438 700 811  
e: [sa@fermaxaus.com.au](mailto:sa@fermaxaus.com.au)

## NZ OFFICE

PO Box 121 110,  
Penrose. 1642

p: 09 337 6229  
e: [nz@fermaxnz.co.nz](mailto:nz@fermaxnz.co.nz)

FERMAX AUSTRALIA

[fermaxaus.com.au](http://fermaxaus.com.au)

FERMAX NEW ZEALAND

[fermaxnz.co.nz](http://fermaxnz.co.nz)