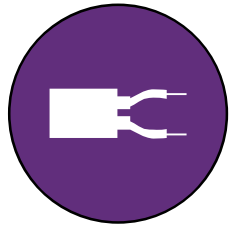




# 2019 / 2020 REFERENCE PROJECTS

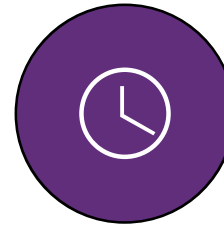


**2 Wires** non-polarised



## WIRING FLEXIBILITY

DUOX works over any kind of cable; Cat5 or Cat6, 4 core, 6 core and Figure-8 cabling. Install any kind of topology: Star, daisy-chain, distribution.



## SIMPLICITY OF INSTALLATION

Same cabling and configuration for audio or video. No distributors or switchers in the main riser.



## DIGITAL TRANSMISSION

Immunity against analogue interferences or humming as it is a full digital system.



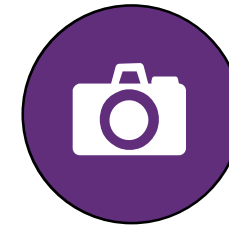
## EASY PROGRAMMING

Easy programming via OSD menu: No dip switches or jumpers needed for monitor's programming. Less than 5 seconds to program a monitor.



## SCALABLE SYSTEMS

Capable of distances up to 500m between devices and 999,999 apartments.



## PHOTOCALLER PICTURE MEMORY

Photocaller: Picture capture memory by default in all DUOX monitors.



# PACE OF CARNEGIE

## APARTMENTS

132

## COMPLETED

January 2020

## SYSTEM

DUOX VEO-XS

## STATE

Victoria

## CLIENT

Pace of Carnegie boasts the ideal combination of sub-urban living and city lifestyle in the heart of this thriving suburb. Just off the bustling and diverse Koornang Road, enjoy all Carnegie has to offer only a stone's throw from home.

3

Doorstations

132

Monitors

01/20

Completed

HOME

# EAST END APARTMENTS

## APARTMENTS

140

## COMPLETED

December 2019

## SYSTEM

DUOX VEO-XS

## STATE

South Australia

## CLIENT

A reflection of the area's creative diversity, the East End apartments are visually adorned with a rich assortment of materials and forms that blend innovation with the heritage and culture of the east end.

2

Doorstations

140

Monitors

12/19

Completed





# IVY APARTMENTS

## APARTMENTS

252

## COMPLETED

Janurary 2020

## SYSTEM

DUOX LOFT Handsets

## STATE

Australian Capital Territory

## CLIENT

Nestled on the northern side of Woden Town Centre, Ivy promises the opportunity to enjoy a balanced lifestyle. With easy access to shops, restaurants, arterial roads, and a broad range of onsite amenities, Ivy provides every opportunity for work, rest and play.

1

Doorstations

252

Monltors

01/20

Completed







# PACE OF ABBOTSFORD

APARTMENTS

132

COMPLETED

January 2020

SYSTEM

DUOX VEO-XS

STATE

Victoria

CLIENT

A selection of unique 1, 2 & 3 bedroom apartments, dual-level heritage townhouses & stunning multi-level residences. Pace of Abbotsford sits within one of Melbourne's most eclectic suburbs and has the style and amenity to match it.

5

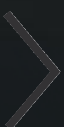
Doorstations

132

Monitors

01/20

Completed





# CHARLOTTE TOWERS

## APARTMENTS

420

## COMPLETED

January 2020

## SYSTEM

DUOX VEO-XS and LOFT Handsets

## STATE

Queensland

## CLIENT

Pace of Carnegie boasts the ideal combination of sub-urban living and city lifestyle in the heart of this thriving suburb. Just off the bustling and diverse Koornang Road, enjoy all Carnegie has to offer only a stone's throw from home.

4

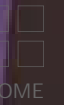
Doorstations

420

Intercoms

01/20

Completed



HOME



# TIARA APARTMENTS

## APARTMENTS

395 Across 4 Blocks

## COMPLETED

December 2019

## SYSTEM

DUOX VEO-XS

## STATE

New South Wales

## CLIENT

Set in the Waterloo area, you will be well placed to enjoy all the conveniences of cosmopolitan living, as well as the myriad of cafes, restaurants, Coles supermarket and other facilities which are found on-site in the apartment complex.

9

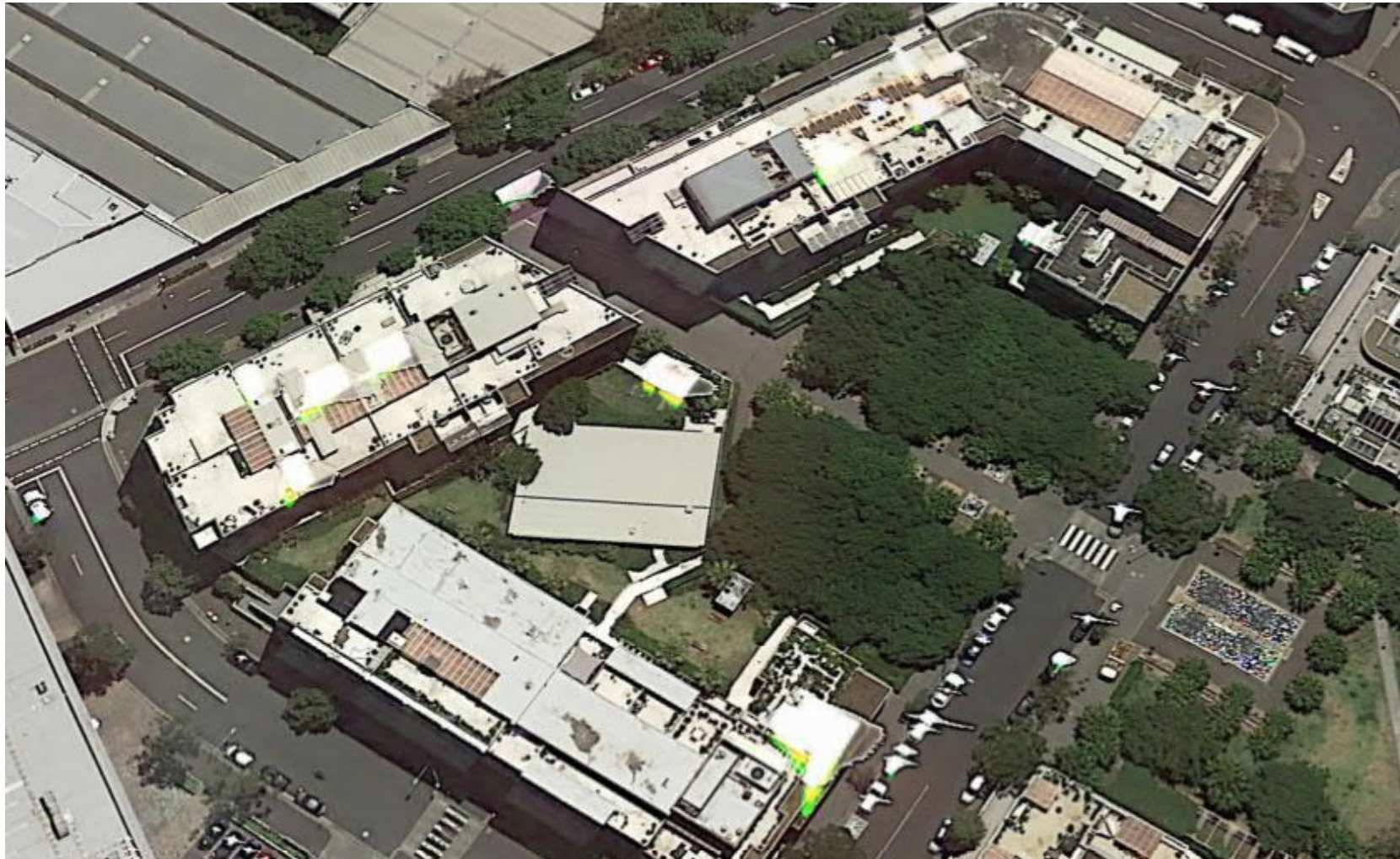
Doorstations

395

Monitors

12/19

Completed





# HUE APARTMENTS

## APARTMENTS

76

## COMPLETED

January 2020

## SYSTEM

DUOX VEO-XS

## STATE

Victoria

## CLIENT

Hue embodies a contemporary design, with its exterior featuring layered facades clustered at irregular intervals. The building has been designed to respond to the nuances of everyday living, taking an expert approach at predicting how you live.

3

Doorstations

76

Monitors

11/19

Completed







# SEA APARTMENTS

APARTMENTS

63

COMPLETED

January 2020

SYSTEM

DUOX VEO-XS

STATE

Queensland

CLIENT

Ideally located in the heart of Palm Beach village, Sea Palm Beach offers an unrivalled coastal lifestyle, with views from the ocean to the hinterland and the luxury of everyday lifestyle amenities at your doorstep.

2

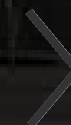
Doorstations

63

Monitors

01/20

Completed





# EVOLVE ON ENID

## APARTMENTS

52

## COMPLETED

October 2019

## SYSTEM

DUOX VEO-XS

## STATE

New South Wales

## CLIENT

This multi-residential development in the heart of Tweed Heads, consisting of an 8-storey residential unit development with 52 apartments with basement car-parking and communal spaces, merges the line between affordability and aesthetics.

1

Doorstations

52

Intercoms

10/19

Completed





# SAP TOWER

APARTMENTS  
40

COMPLETED  
October 2019

SYSTEM  
DUOX VEO-XS

STATE  
Auckland

**CLIENT**  
SAP Tower is one of Auckland's most iconic A grade buildings in the highly sought after location of New Zealand's premier business address of Queen Street. The property comprises 17,603m2 of high quality office and retail accommodation with unparalleled amenities as well as secure onsite car parking for 313 vehicles.

1  
Doorstations

40  
Monitors

10/19  
Completed





# ONEHUNGA MALL APARTMENTS

## APARTMENTS

42

## COMPLETED

August 2019

## SYSTEM

DUOX VEO-XS

## STATE

Auckland

## CLIENT

340 Onehunga Mall is a residential development comprising 42 high quality apartments. It is ideally located within easy walking distance of the many amenities of Onehunga Town Centre, Cornwall Park with good road and public transport options in all directions.

5

Doorstations

42

Monitors

08/19

Completed







## NSW OFFICE

Unit 1, 37-39 Green St,  
Banksmeadow, NSW. 2019  
p: 02 9700 1700  
e: sales@fermaxaus.com.au

## VIC OFFICE

Unit 30, 640-680 Geelong Rd,  
Brooklyn, VIC. 3012  
p: 03 9314 2220  
e: vic@fermaxaus.com.au

## QLD OFFICE

Unit 11, 8 Fortitude Cres,  
Burleigh Heads, QLD. 4220  
p: 07 5520 2266  
e: qld@fermaxaus.com.au

## WA OFFICE

Unit 2, 26 Gibberd Rd,  
Balcatta, WA. 6914  
p: 08 9240 2624  
e: wa@fermaxaus.com.au

## SA OFFICE

PO Box 161,  
Torrensville Plaza, SA. 5031  
p: 08 7009 4288  
e: sa@fermaxaus.com.au

## NZ OFFICE

PO Box 121 110,  
Penrose. 1642  
p: 09 337 6229  
e: nz@fermaxnz.co.nz

## ACT OFFICE

PO Box 619,  
Fyshwick, ACT. 2609  
p: 02 6190 1555  
e: act@fermaxaus.com.au

## NT OFFICE

p: 08 7999 9162  
e: nt@fermaxaus.com.au



FERMAX AUSTRALIA

fermaxaus.com.au

FERMAX NEW ZEALAND

fermaxnz.co.nz